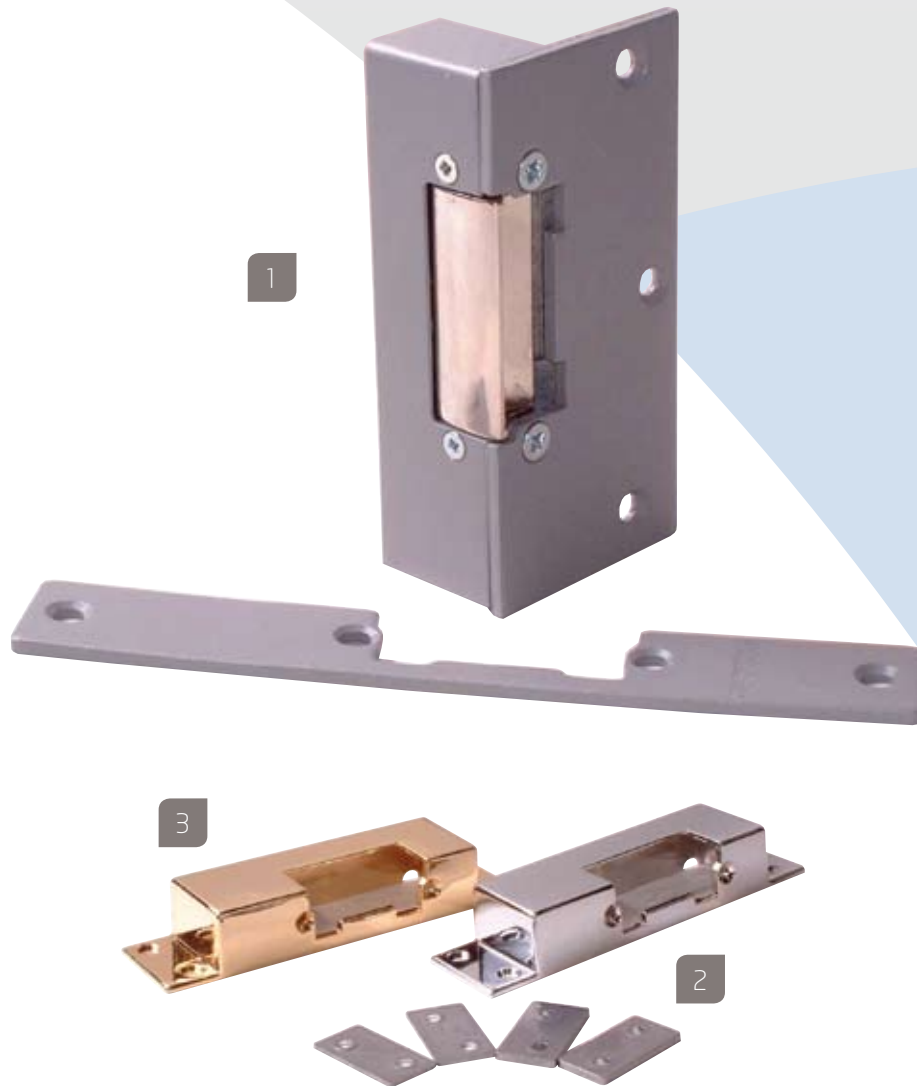


# electric strikes



## Cost-effective electric strikes offering great versatility

Our range of electric strikes is suitable for electronic unlocking of both rim latches and standard mortice night latches in domestic and light commercial applications.

The lock is reversible to suit both left and right-hand opening doors and with both fail safe and fail secure options available, is ideal for many applications where cost is a prime concern.

With easy-to-fit surface cases and a choice of high quality finishes, the lock can be tailored to complement or contrast with its surroundings.

# electric strikes

DS0042\_Issue 1

## SPECIFICATIONS

TDSi Part No.	2921-0233	2921-0234
Format	Fail secure	Fail safe
Monitored	No	
Jaw Strength	880 lb	
Supply Voltage	8~12 V AC or DC	12 V DC
Nominal Current	780 mA (AC), 150 mA (DC)	150 mA
Connection	Screw terminal	
Lock Dimensions	108 x 50 x 34 mm, mortice plate 160 mm long	
Compatible locks	Yale-type rim latch or basic mortice night latches with a maximum throw of 12 mm	
Boxed Weight	0.4 kg	

## FEATURES & BENEFITS

### Cost effective locking solution

Ideal for use in projects where cost is of paramount importance.

### Includes mortice plate

Allows the product to be used in conjunction with Yale-type rim latches or basic mortice latches.

### Fail-safe or fail-secure options

Select the product that best suits your application.

### Range of surface housings

Tailor the look of to suit the surroundings. Choose from grey, brass or chrome.

### Reversible

Use the lock for either right or left hand opening doors.

### Powder Coated Finish

Supplied with a highly durable grey finish.

## ORDERING INFORMATION

- Part Number: 2921-0233**  
**Description:** Fail secure electric strike complete with mortice plate – 12 V AC/DC.  
**Part Number: 2921-0234**  
**Description:** Fail safe electric strike complete with mortice plate – 12 V DC.
- Part Number: 2921-0236**  
**Description:** Chrome surface housing for electric strikes.  
**Part Number: 2921-0237**  
**Description:** Grey surface housing for electric strikes.
- Part Number: 2921-0238**  
**Description:** Brass surface housing for electric strikes.



**TDSi UK**  
Unit 10 Concept Park,  
Innovation Close,  
Poole,  
Dorset BH12 4QT  
United Kingdom  
t: +44 (0)1202 723535  
f: +44 (0)1202 724975  
e: sales@tdsi.co.uk

**TDSi France**  
Immeuble ATRIA,  
2 rue du Centre  
93160 NOISY LE GRAND,  
France  
t: +33 (0)1 58 84 20 90  
f: +33 (0)1 58 84 20 91  
e: infos@tdsi-france.com

**TDSi China**  
Rm 103, 1 Bld,  
Shangsha Innovation Science  
& Technology Park,  
9283 Binhai Road,  
Futian District,  
Shenzhen 518048,  
P.R.China  
t: 86-755-82535725,  
82535720  
f: 86-755-82535770  
e: tdsiinfo@microgarde.com.cn